

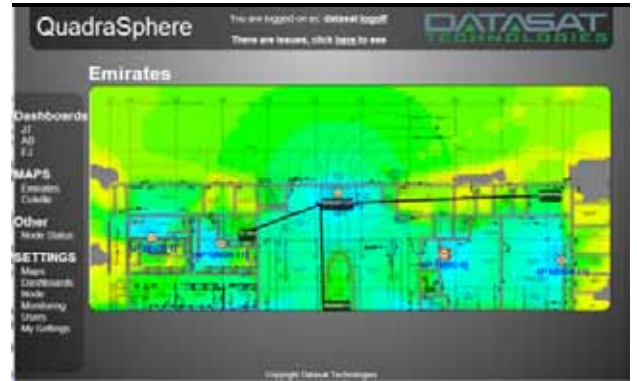
# QuadraSphere Network Monitoring System (NMS)

Every communication network requires a network monitoring system to efficiently monitor various network parameters and pre-empt network outages. As the network becomes larger, the NMS becomes more critical to the long term health of the network. The QuadraSphere is the Datasat NMS which is designed to monitor the Datasat portfolio of products and specifically the QuadraFlex outdoor wireless routers.

The QuadraEdge Subscriber module is one of the few customer premises equipment working on Layer 3 that is now manageable on the QuadraSphere NMS. The system is split into the hardware and software element and is designed to compliment the capabilities of the QuadraFlex ruggedised outdoor routers. Working together and developed keeping in mind the role of an average IT administrator, QuadraSphere is designed to be simple yet powerful. With emphasis on flexibility and graphical representation of information, the system is critical for networks where network outages are unacceptable.

With a simple, yet powerful interface, the QuadraSphere is a 'fire and forget' system. Once connected to the network, it can be accessed from anywhere, and on any device with a web browser. Chrome is the browser of choice, and both PC and mobile versions of this are supported. Access to various parts of the network can be segregated with security defined users and access control. Custom Maps and widget based dashboards can be set up in minutes to monitor network health.

Further cloud based implementation of the NMS enables proactive and reactive monitoring of multiple networks. Datasat offers a cloud based NMS solution to monitor networks and a solution for this can be provided on request.



## > QUADRASPHERE FEATURES

- Monitor DN100 and DN200 QuadraFlex nodes.
- Monitor QuadraEdge devices.
- Solid state storage for robustness, integrity and quiet operation.
- Map view for easy identification of network and one click access to network infrastructure.
- Multi map set-up to enable multi network monitoring.
- Custom dashboard setup to enable easy visual monitoring of networks. Create dashboards according to the information that needs to be monitored.
- Multi dashboard setup to enable each network administrator to have their own set of dashboards and maps.
- Multiple user setup to allow different network administrator profiles to be used at the same time.
- Precision monitoring of known areas with the help of timed monitoring feature.
- Get information such as ping times, Ethernet throughput and network health delivered at one location.
- Accessible on mobile devices with Chrome browser support.
- Local and cloud based solutions available.
- NMS software needs no additional per network element licence.
- NMS hardware equipped to handle 50 network elements. For bigger networks, more powerful hardware platforms are available on request.



The NMS is provided on a full solid state server which acts as the heart of the network. It has been designed to be the first point of call for any trouble shooting or for information gathering.

## Specifications

### Dimensions

192x210x62mm

### Power requirements:

12v DC via 110-240v 50/60Hz supplied PSU.

### I/O interfaces:

4x USB 2.0 Ports

VGA port for display

HDMI port for display

Stereo Line out and Analogue Line in

### Accessories needed:

Monitor (VGA or HDMI compatible)

Mouse and keyboard

### Ordering options:

VESA mount version

Rail mount version

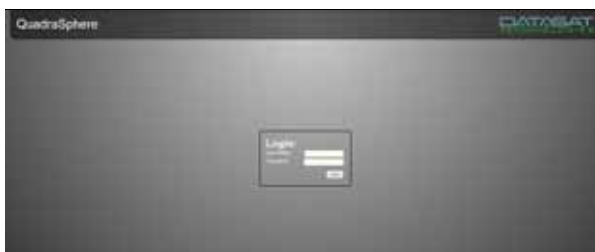
Wall mount version

### In the Box:

1 Mini ITX Server with QuadraSphere licence

### Quickstart guide

12V 80W PSU



Contact us today with your communications requirements on  
+44 (0)118 934 9199 or email us at [sales@datasat.com](mailto:sales@datasat.com)